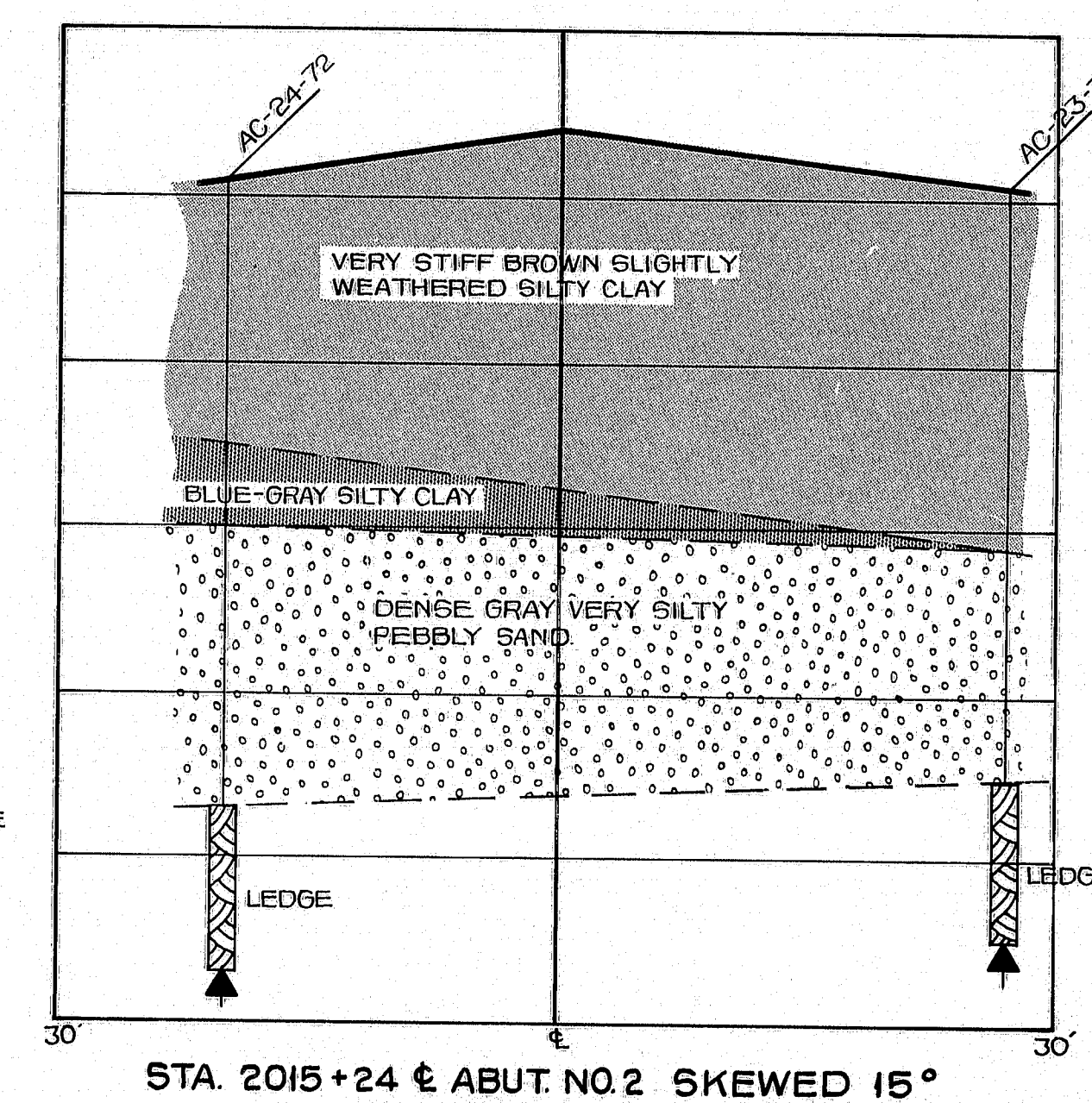
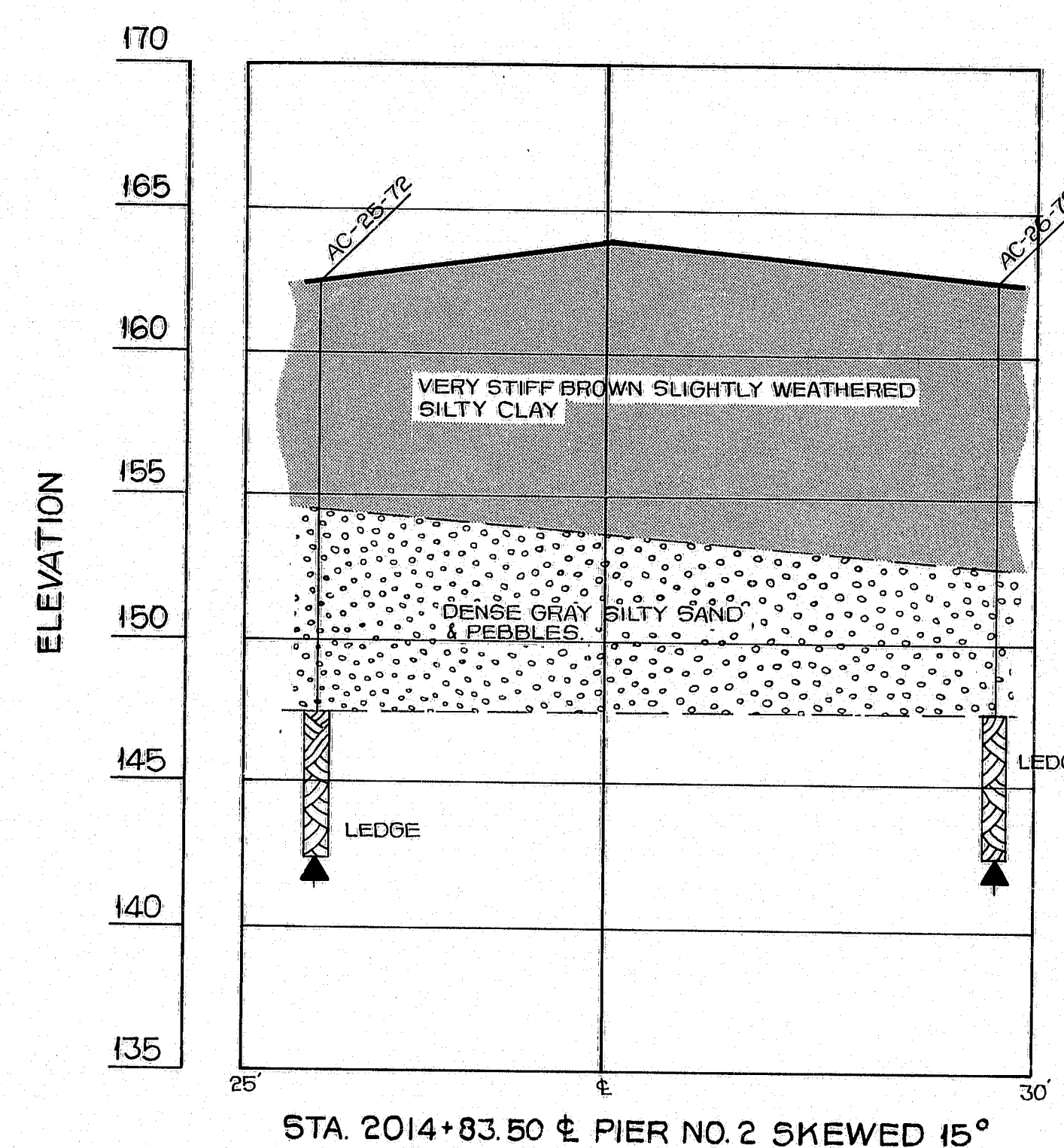
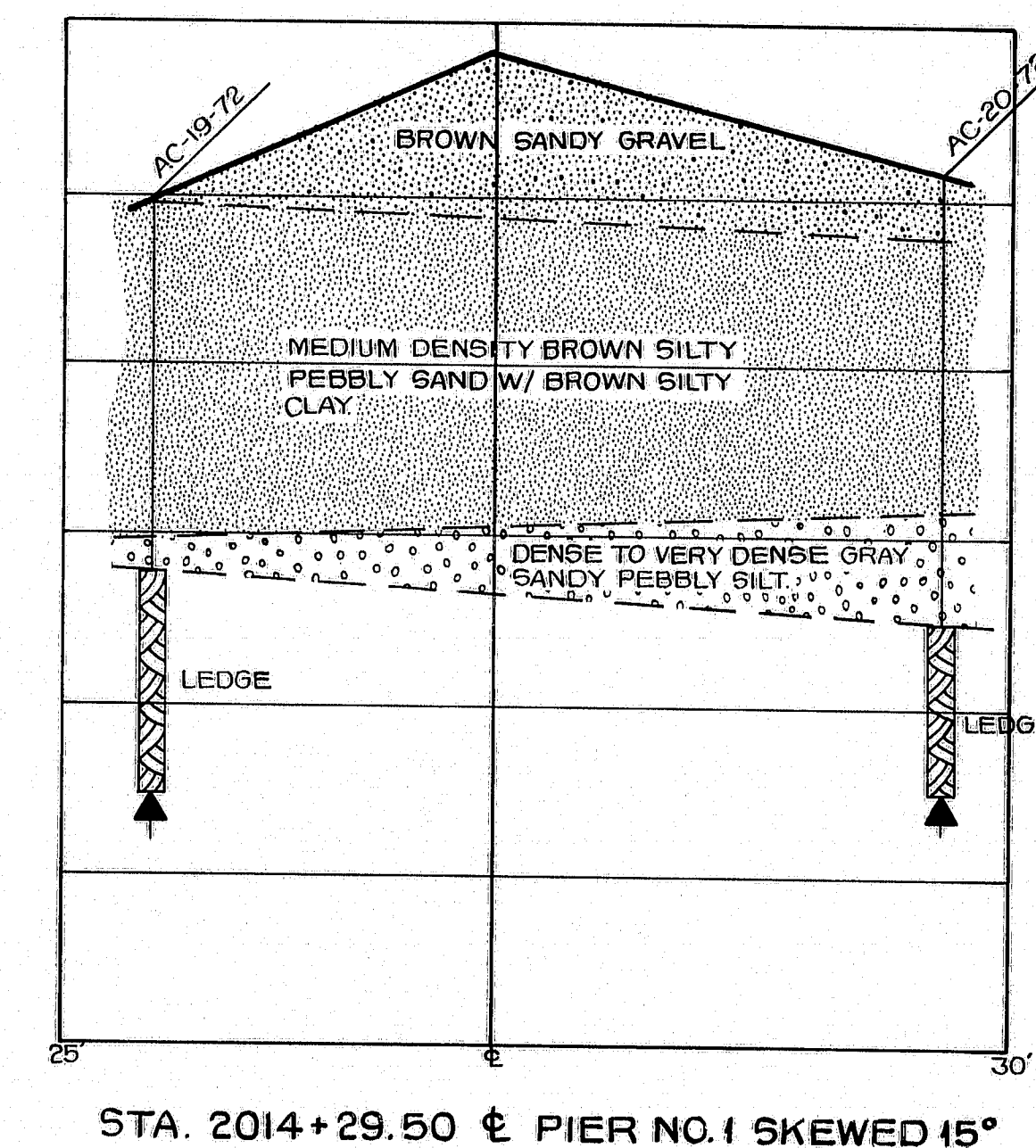
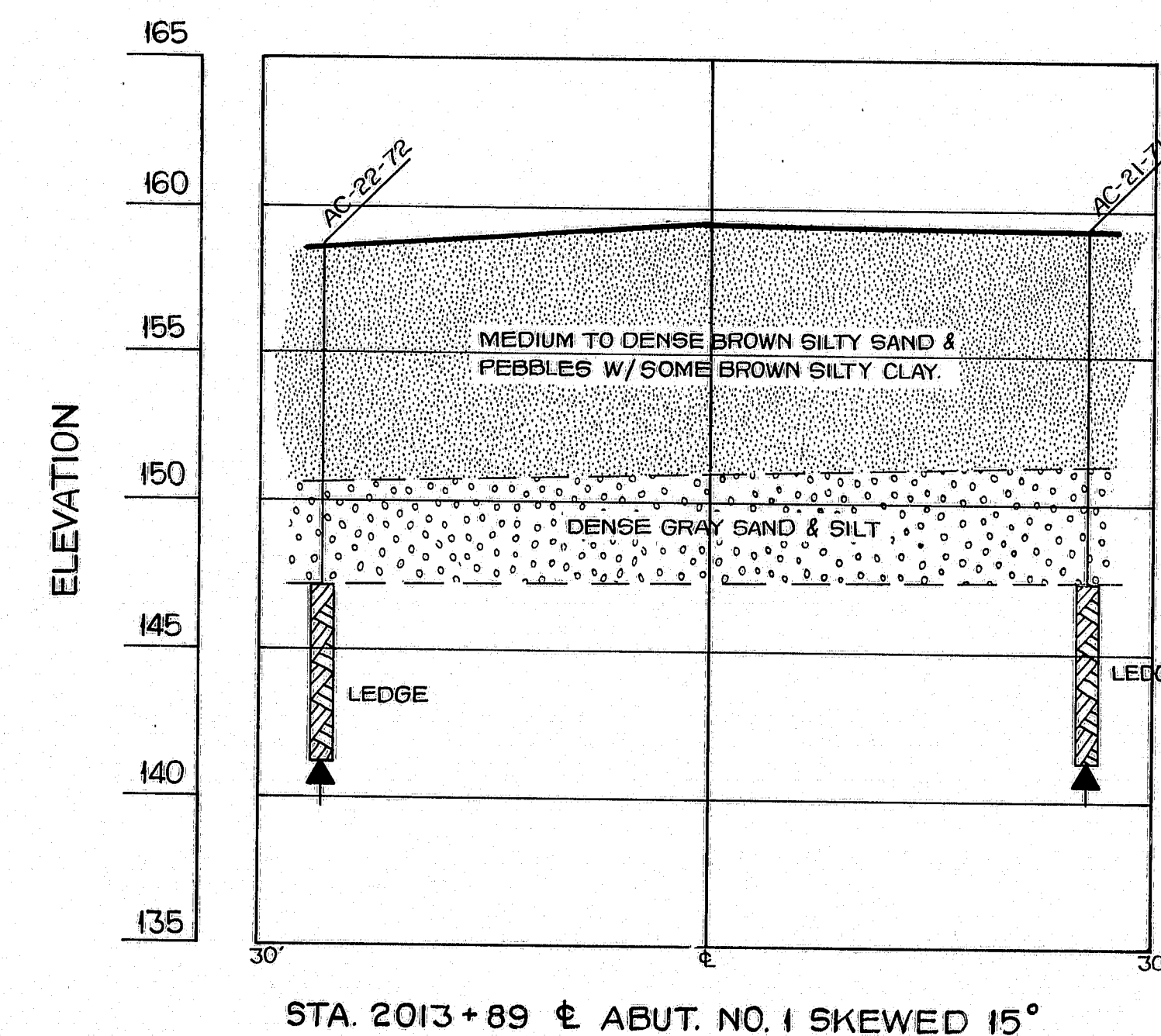
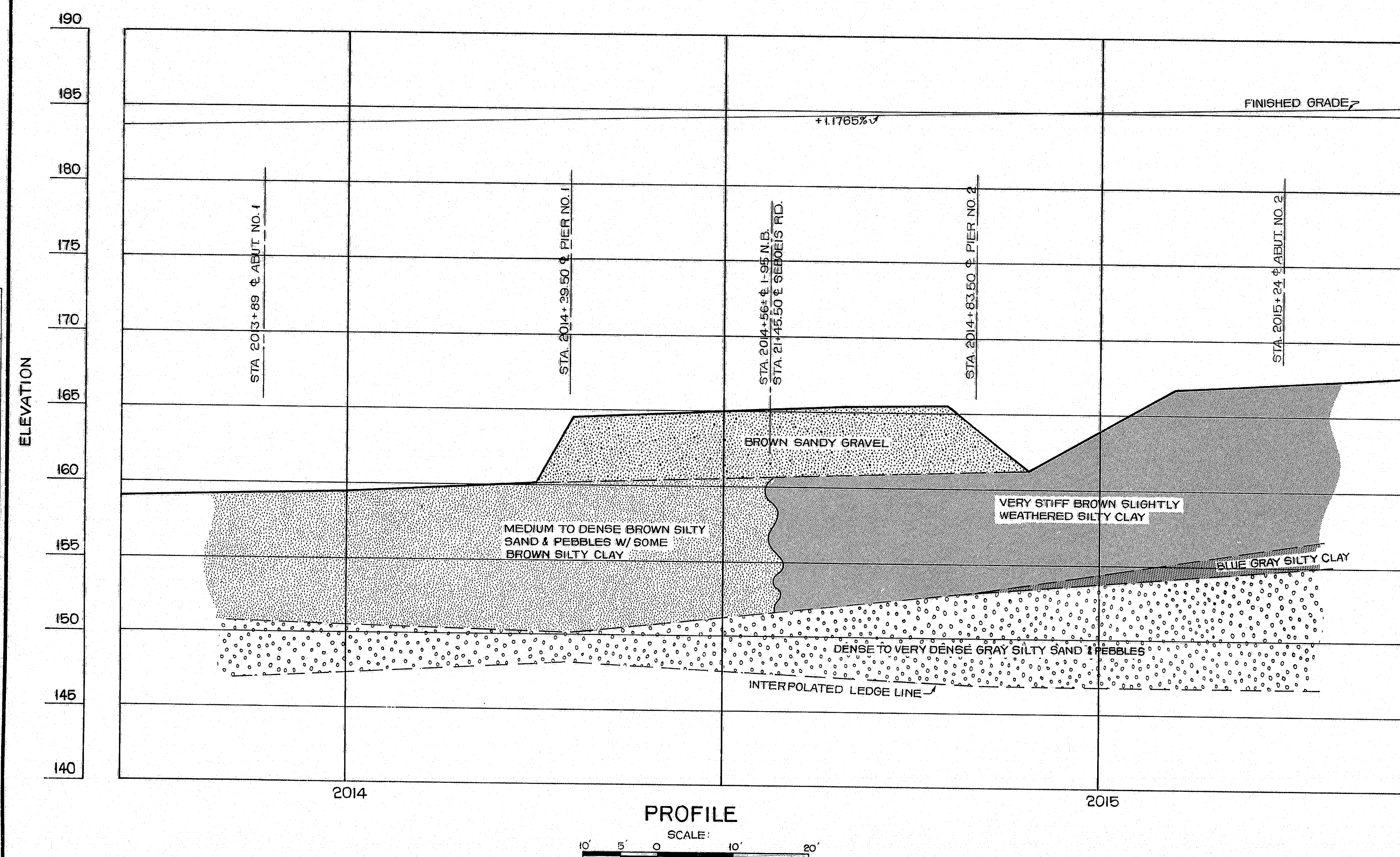
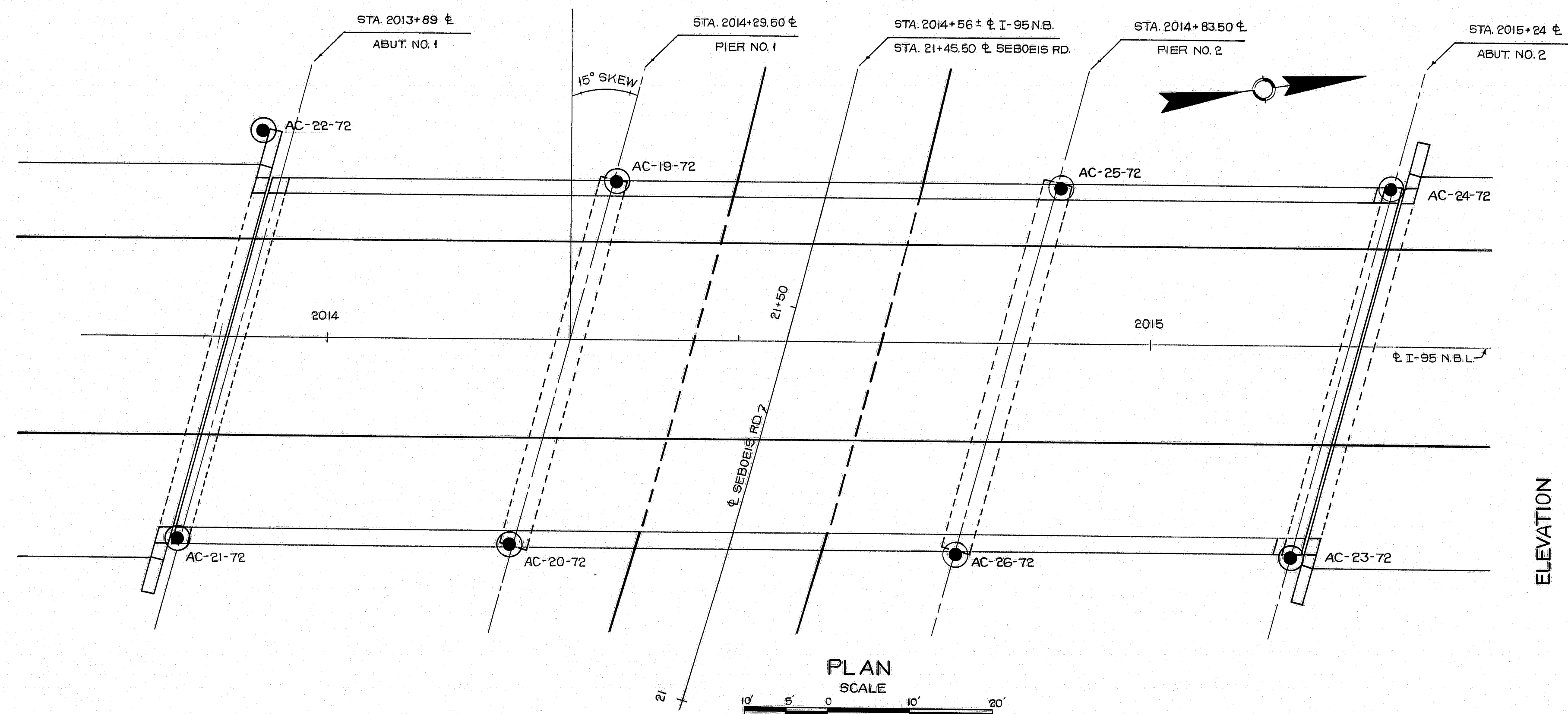


D. P. S.	STATE	PROJECT NUMBER	SHEET NO.	TOTAL SHEETS
1	MAINE	I-95-2(99)	45	47



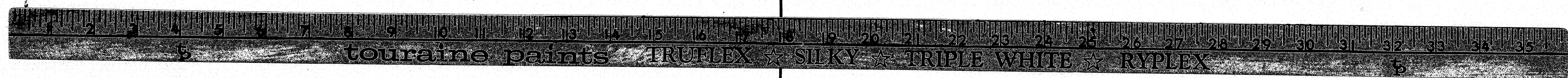
TRANSVERSE SECTIONS

STATE OF MAINE
DEPARTMENT OF TRANSPORTATION
INTERSTATE 95 (N.B.L.)
OVER
SEBOEIS ROAD
IN THE TOWN OF
HOWLAND
PENOBSCOT COUNTY
FOUNDATION SURVEY

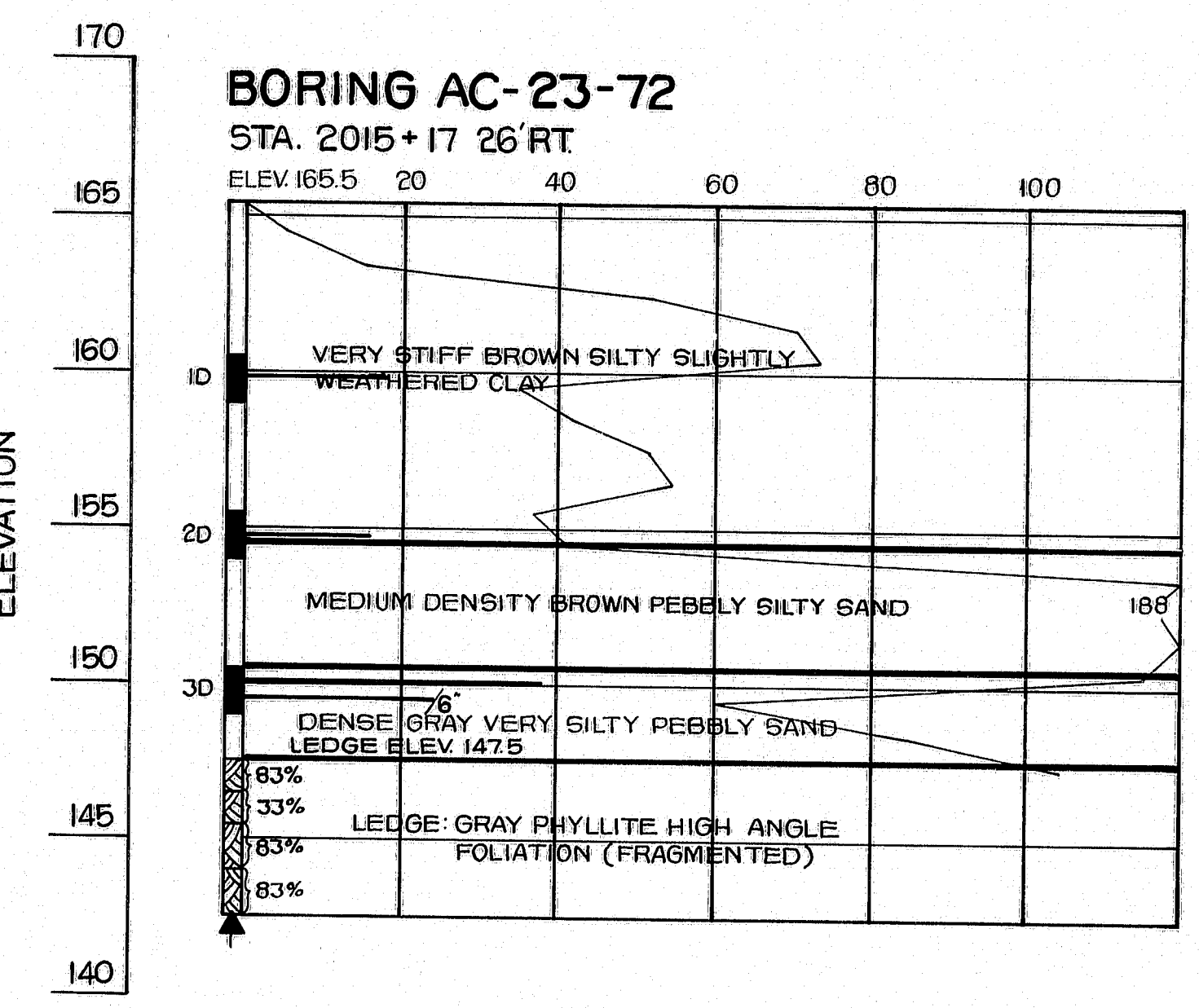
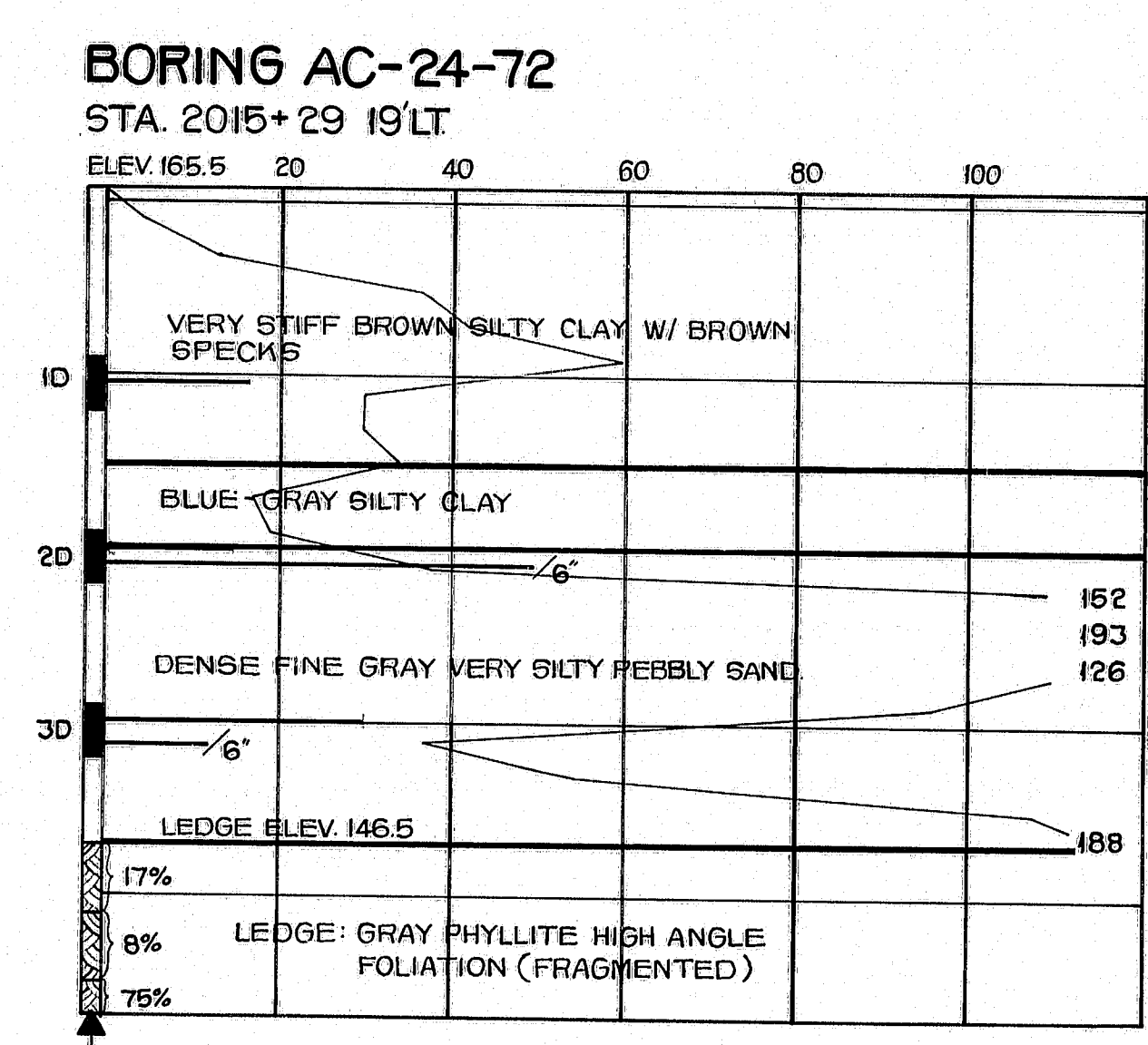
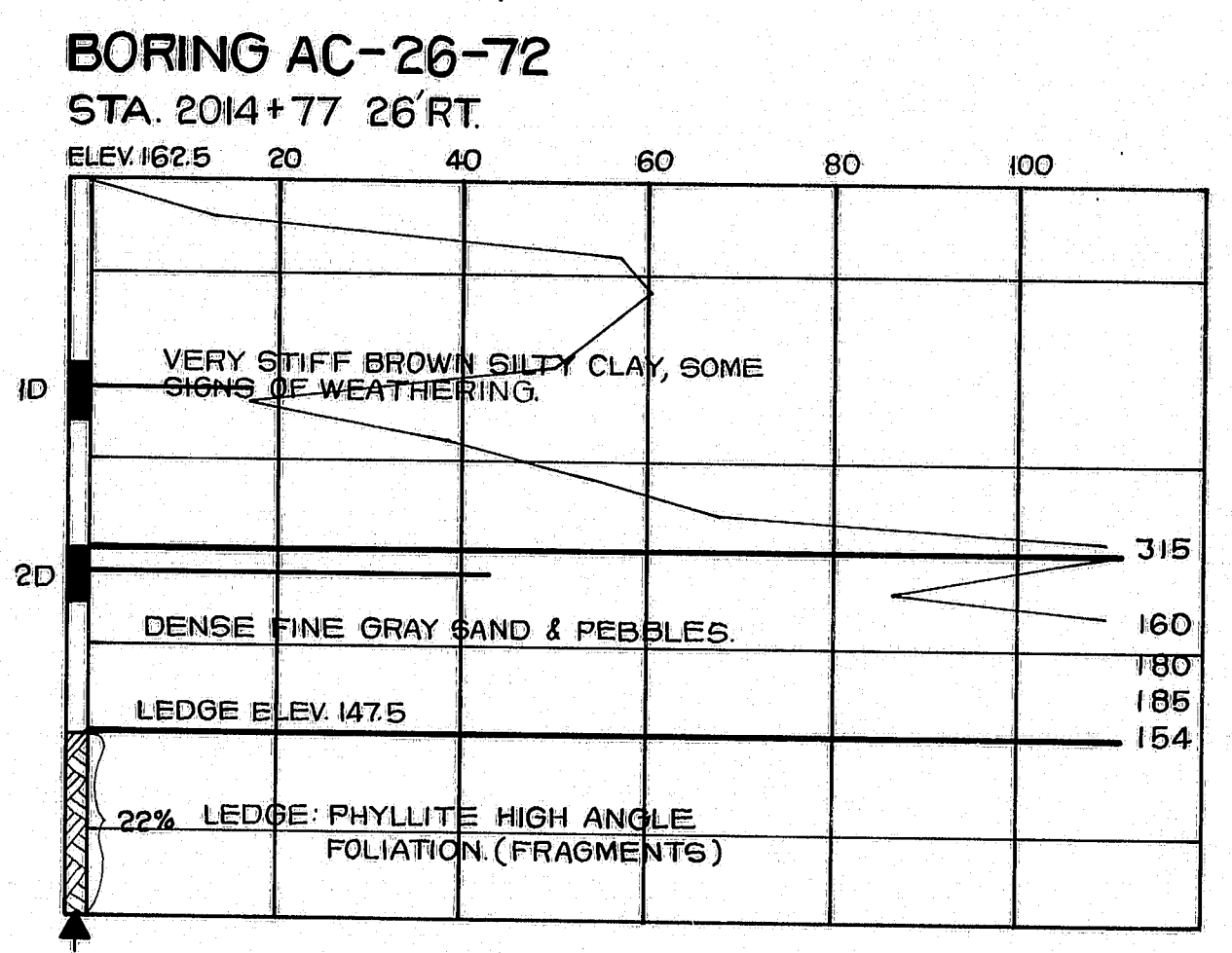
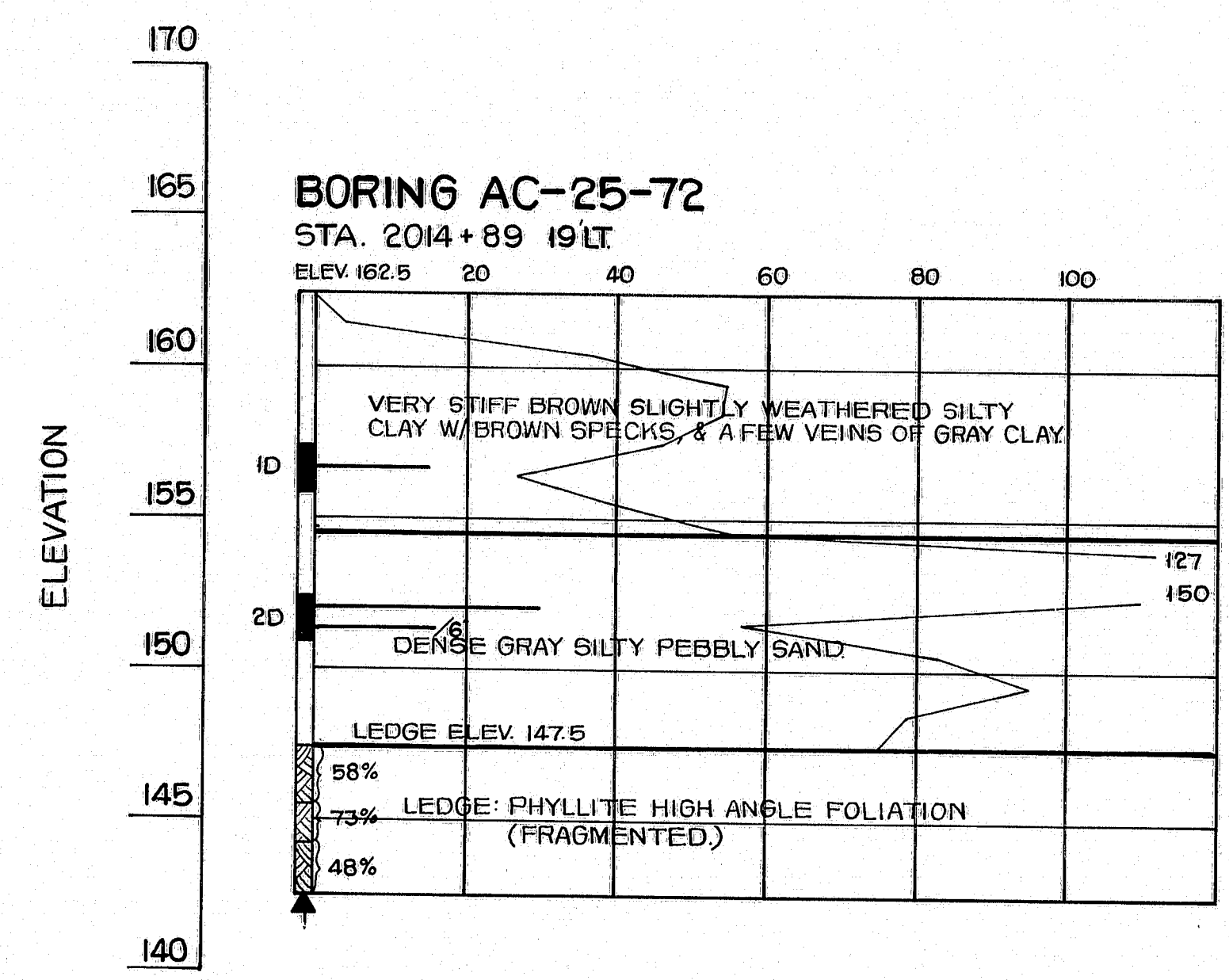
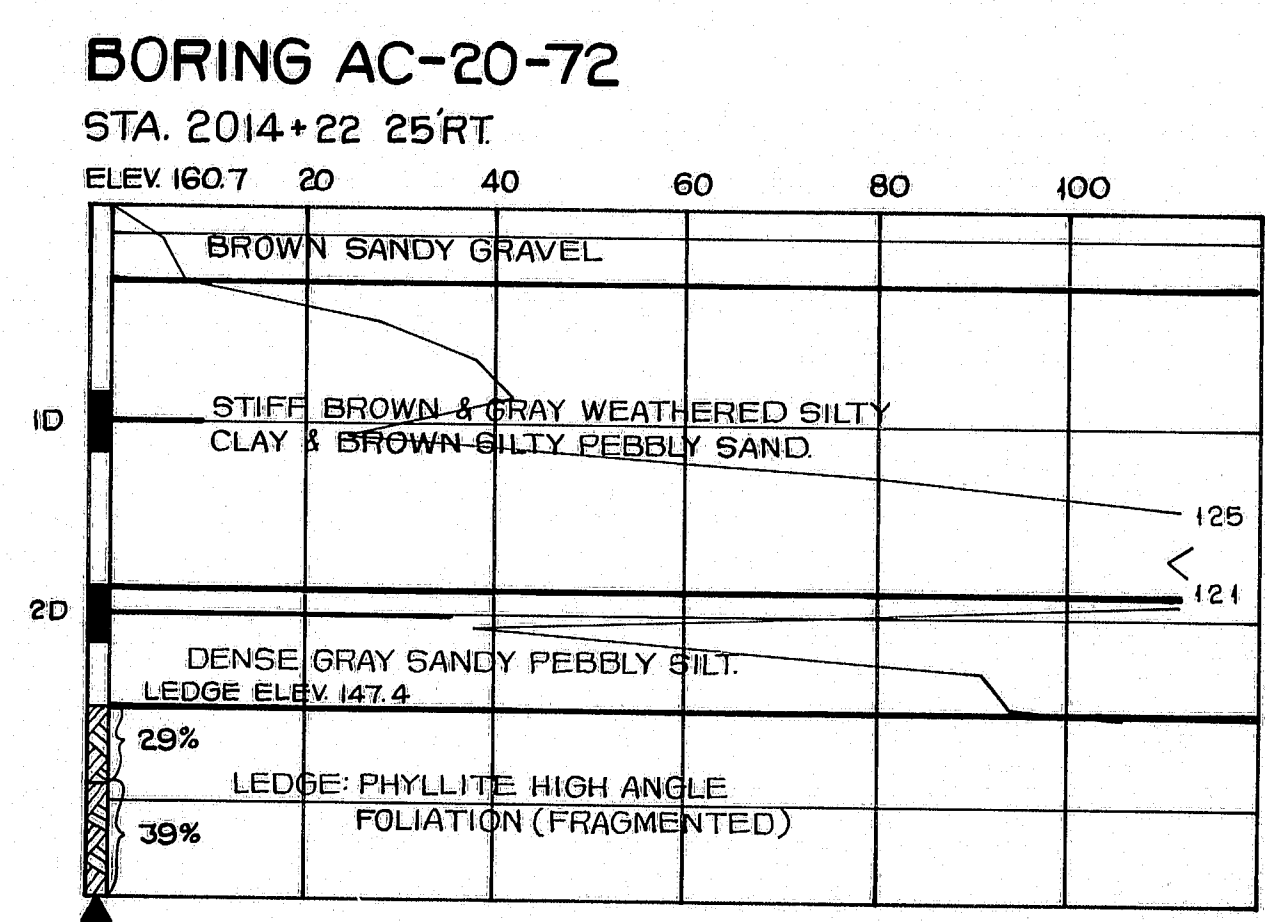
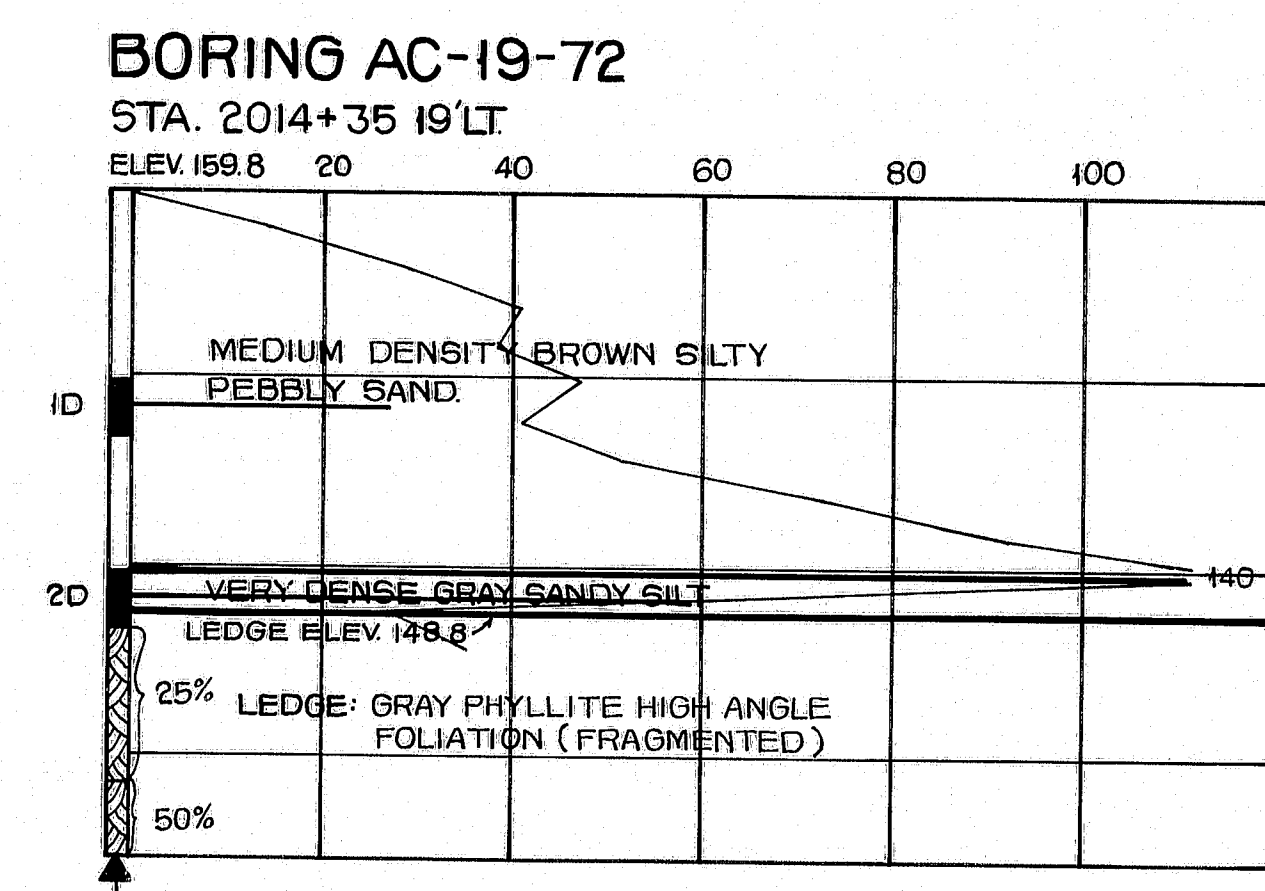
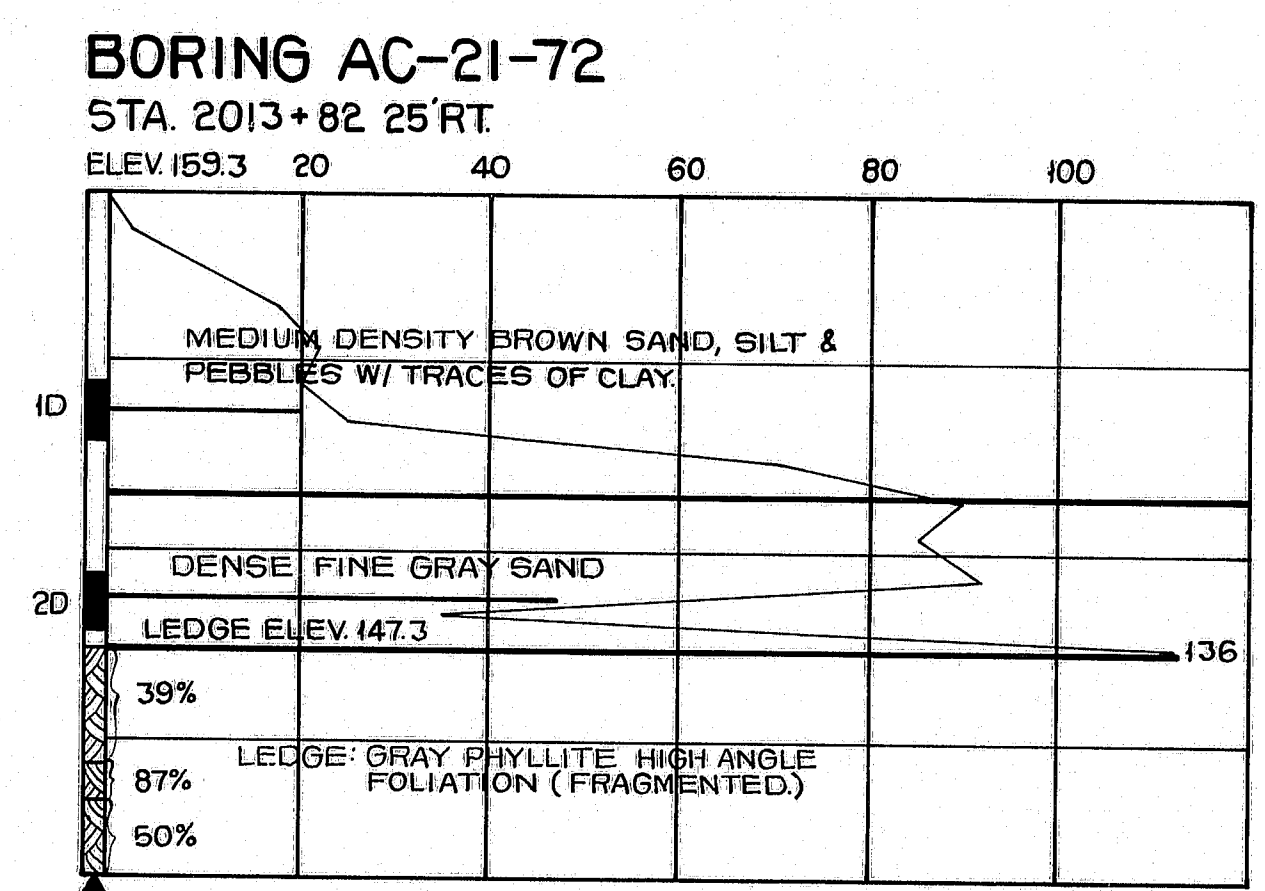
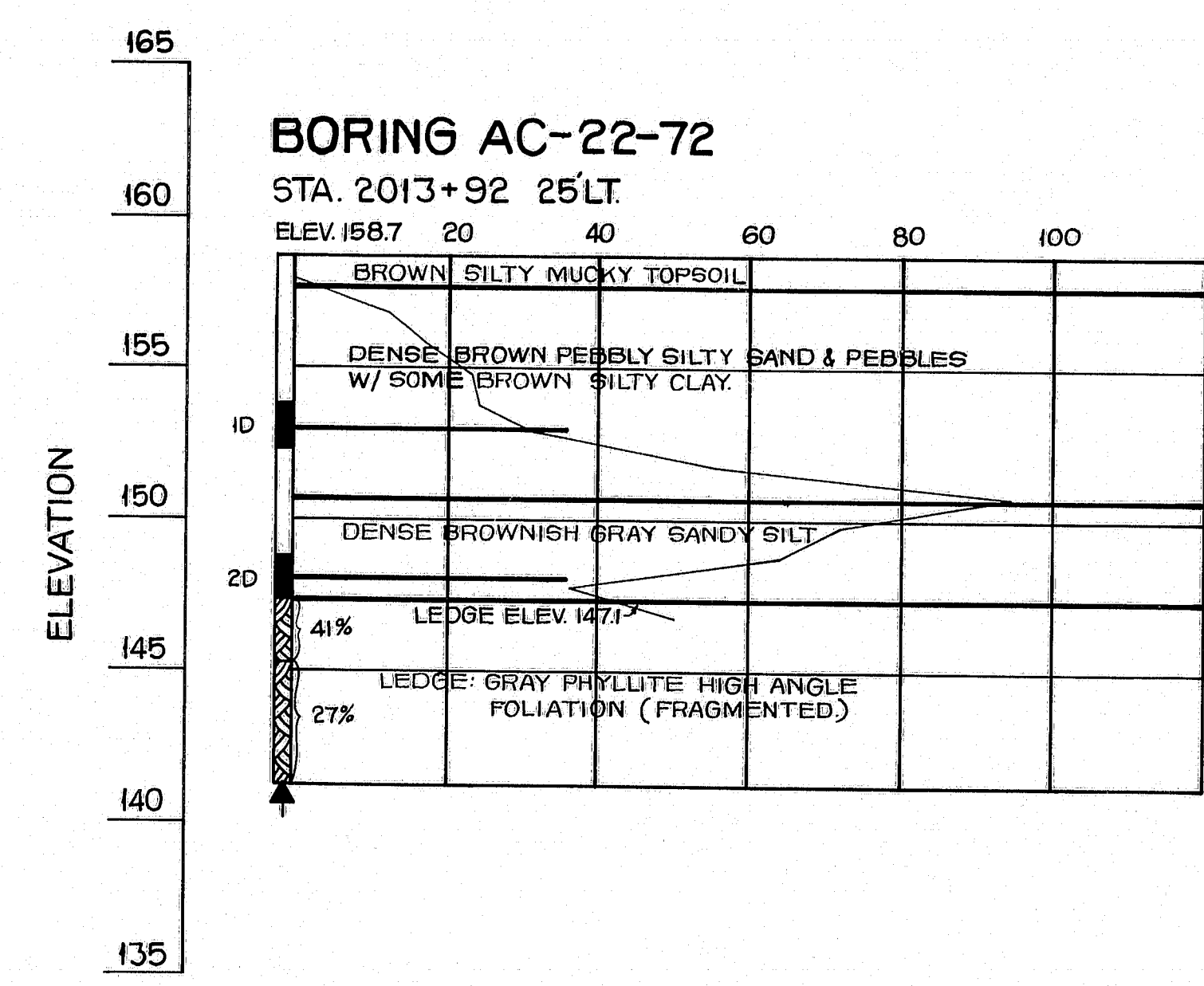
SHEET OF AUGUSTA, MAINE SEPT. 1973

145-107

PLANS	DESIGN - DETAILED	DATE
	CHECKED	
	REVISIONS	
	FIELD CHANGES	



S. P. R. REG. NO.	STATE	PROJECT NUMBER	SHEET NO.	TOTAL SHEETS
1	MAINE	7 95 (299)	46	47



BORING NOTES

All samples and vials are made ahead of casing.
Water elevation
Number of blows required to drive extra heavy casing one foot with 400 ft. lbs. of energy per blow.
Location of sample or sample attempt
Number and type of sample
S & H sampler # 1290's
Number of blows required to drive spoon or tubing one foot with 350 ft. lbs. of energy per blow.
Bottom of boring (may not be bottom of soil strata).
Locations cored by diamond bit and per cent recovery of rock.

STATE OF MAINE
DEPARTMENT OF TRANSPORTATION
INTERSTATE 95 (N.B.L.)
OVER
SEBOEIS ROAD
IN THE TOWN OF
HOWLAND
PENOBSCOT COUNTY
BORING DETAILS
SHEET OF AUGUSTA, MAINE SEPT. 1973

145-108

